



# Solar Powered Air Compressor



# AVAILABLE MODELS

MODEL NUMBER	CFM	SET POINT (PSI)	CLASSIFICATION
0.75-2.0-90-EX	2.0	90 PSI	CLASS 1 DIV. 2
1.0-2.7-90-NC	2.7	90 PSI	NON-CLASSIFIED
1.0-3.6-45-NC	3.5	45 PSI	NON-CLASSIFIED
1.0-4.0-90-EX	4.0	90 PSI	CLASS 1 DIV. 2

- Solar packages vary according to air usage. The solar panels can be mounted on tank skid or on separate skid(s)(see example on page 8.)
- Wattage of solar arrays vary by location where unit will be operated.
- Optional wind turbine for inclement weather charging is available (see example on page 8.)

# MODEL 0.75-2.0-90-EX

- 2.0 CFM @ 90 PSI
- Class 1 Div. 2 Rated
- 60 Gallon Storage Tank
- ¾ HP Explosion Proof Motor
- 125 PSI Max Pressure

Common Solar Packages			
AMPS	VOLTS	CFD	BATTERY BACK UP
1.5 AMP	24VDC	150 CFD	4-100 AMP BATTERIES PROVIDES 5 DAYS BACK UP
3.0 AMP	24VDC	300 CFD	8-100 AMP BATTERIES PROVIDES 5 DAYS BACK UP

- Solar packages vary according to air usage.
- Wattage of solar arrays vary by location where unit will be operated.

# MODEL 1.0-2.7-90-NC

- 2.7 CFM @ 90 PSI
- Non-Classified
- 60 Gallon Storage Tank
- 1 HP 24VDC Motor
- 125 PSI Max Pressure

Common Solar/Wind Packages			
AMPS	VOLTS	CFD	BATTERY BACK UP
3.25 AMP	24VDC	475 CFD	10-100 AMP BATTERIES & AIR 40 WIND GENERATOR PROVIDES 5 DAYS BACK UP

- *This unit will operate most single wells and a separator with low bleed controls.*
- Solar packages vary according to air usage.
- Wattage of solar arrays vary by location where unit will be operated.

# MODEL 1.0-3.6-45-NC

- 3.6 CFM @ 45 PSI
- Non-Classified
- 60 Gallon Storage Tank
- 1HP 24VDC Motor
- 75 PSI Max Pressure
- Matched with air amplifier for 100 PSI Actuators

## Common Solar/Wind Packages

AMPS	VOLTS	CFD	BATTERY BACK UP
3.25 AMP	24VDC	600 CFD	8-100 AMP BATTERIES & AIR 40 WIND GENERATOR PROVIDES 5 DAYS BACK UP
8.0 AMP	24VDC	1200 CFD	16-100 AMP BATTERIES & AIR 40 WIND GENERATOR PROVIDES 5 DAYS BACK UP

- *3.25 AMP will operate most single wells and a separator with standard controls*
- *8.0 AMP will operate most sites with 2 wells and 2 separators with standard controls*
- Solar packages vary according to air usage.
- Wattage of solar arrays vary by location where unit will be operated.

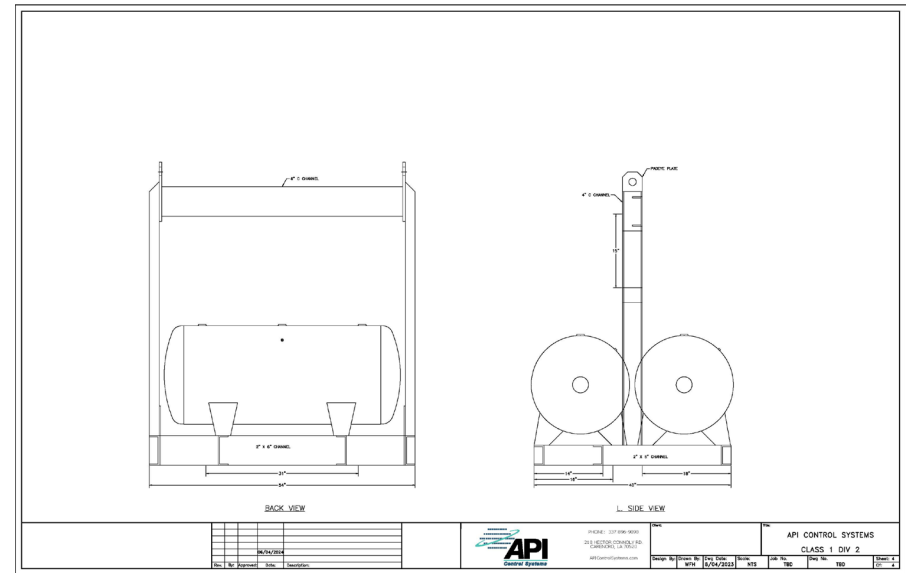
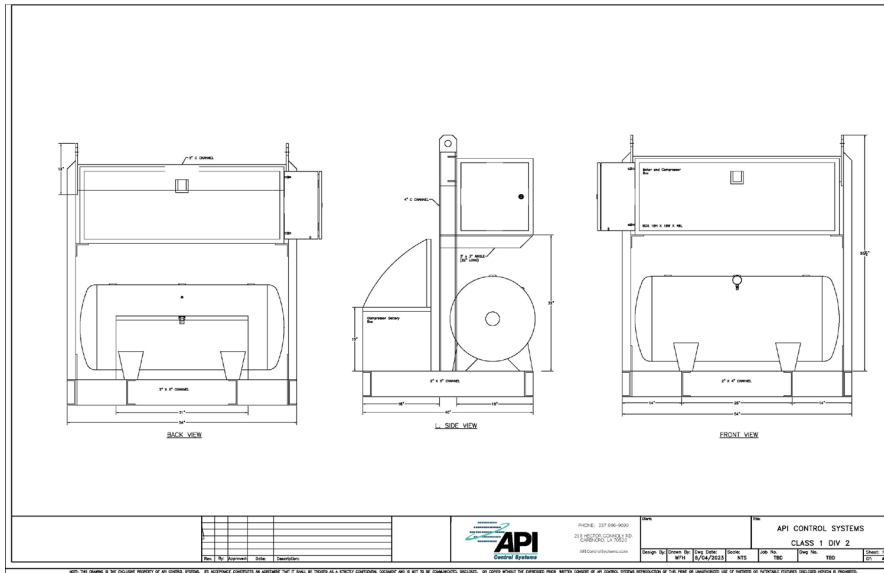
# MODEL 1.0-4.0-90-EX

- 4.0 CFM @ 90 PSI
- Class 1 Div. 2 Rated
- 60 Gallon Storage Tank
- 1 HP Explosion Proof Motor
- 125 PSI Max Pressure

Common Solar Packages			
AMPS	VOLTS	CFD	BATTERY BACK UP
1.5 AMP	24VDC	150 CFD	6-100 AMP BATTERIES PROVIDES 5 DAYS BACK UP

- Solar packages vary according to air usage.
- Wattage of solar arrays vary by location where unit will be operated.

# POTENTIAL SKID LAYOUTS



- Above example skid contains battery box, tanks, and pump/motor package.

- Extra tank only skids can be installed when extra volume is required if appropriate solar / battery systems are included.



(337) 896-9090 | [INFO@APIControlSystems.com](mailto:INFO@APIControlSystems.com)

API Control Systems, Inc. | ISO 9001:2015 | UL 508A | UL 121201  
Licensed & Insured | LA State Electrical License No. 78812 | MS No. 26359-MC | AL No. 09379